

MERIDIAN

ARCHWALL BUILDINGS

ARCHWALL BUILDINGS



MERIDIAN



Since launching our product line 65 years ago, Meridian has set the standard of excellence in the storage and handling industry. Meridian has continuously incorporated the latest technological innovations to meet our customers' ever-changing needs.

Meticulous attention to quality and detail reflect the attitude of an enthusiastic and skilled production team, lending confidence to each Meridian customer of a superior and dependable product. Meridian's best references are the thousands of customers who have experienced the quality, service and value Meridian has become known for.





MAXIMUM FLEXIBILITY.

Meridian's Rugged Double-slide Doors

- ▶ Ease of access & life-long performance
- ▶ Well balanced & secure
- ▶ No sag, easy-glide operation
- ▶ Effective seal against the weather

Revolutionary Construction & Foundation

- ▶ Minimal site preparation
- ▶ Constructed with 3/8" bolts plated to "JS1500" spec
- ▶ Revolutionary die-formed footing channel (the most practical method available)
- ▶ Life-long strength & performance
- ▶ Simple construction
- ▶ Future expansion always possible
- ▶ Maintenance-free performance

Superior Roof System

- ▶ Heavy gauge galvanized steel arch panels
- ▶ 3'5" (1.067m) panels bolt together easily
- ▶ Sealant applied to all seam & overlap joints to ensure weather-tight structure
- ▶ Sealed & double bolted panel splices for maximum strength & durability
- ▶ Special metal flashings & rubber gaskets seal endwall connections to arch panels

Room to grow.

Your Meridian ArchWall can be easily expanded at any time simply by unbolting the existing endwall, adding new arch sections and replacing the original endwall.

ARCHWALL 4500 DOUBLE SLIDING DOOR SIZES

ARCHWALL 4500 OVERHEAD DOOR SIZES

SPAN	DOOR WIDTH	WIDTH METER	HEIGHT	HEIGHT METER	STEMWALL HEIGHT REQUIRED	SPAN	DOOR WIDTH	WIDTH METER	HEIGHT	HEIGHT METER	STEMWALL HEIGHT REQUIRED
40 Span	16' 10"	5.13m	14'-15'	4.27m-4.57m	0	40 Span	16' 10"	5.13m	14'-15'	4.27m-4.57m	0-1'
	20' 3"	6.17m	14'-16'	4.27m-4.88m	0-2'		20' 3"	6.17m	14'-16'	4.27m-4.88m	1'-3'
	23' 8"	7.21m	14'-15'	4.27m-4.57m	1'-2'		23' 8"	7.21m	14'-15'	4.27m-4.57m	2'-3'
50 Span	16' 10"	5.13m	14'-18'	4.27m-5.49m	0-1'	50 Span	16'-10"	5.13m	14'-18'	4.27m-5.49m	0-1'
	20' 3"	6.17m	14'-18'	4.27m-5.49m	0-1'		20' 3"	6.17m	14'-18'	4.27m-5.49m	0-1'
	23' 8"	7.21m	14'-18'	4.27m-5.49m	0-2'		23' 8"	7.21m	14'-18'	4.27m-5.49m	0-2'
	27' 1"	8.26m	14'-18'	4.27m-5.49m	0-3'		27' 1"	8.26m	14'-18'	4.27m-5.49m	0-4'
51 Span	16' 10"	5.13m	14'-18'	4.27m-5.49m	0-3'	51 Span	16' 10"	5.13m	14'-18'	4.27m-5.49m	0-4'
	20' 3"	6.17m	14'-18'	4.27m-5.49m	0-4'		20' 3"	6.17m	14'-18'	4.27m-5.49m	0-5'
	23' 8"	7.21m	14'-18'	4.27m-5.49m	1'-5'		23' 8"	7.21m	14'-18'	4.27m-5.49m	2'-6'
	27' 1"	8.26m	14'	4.27m	2'		27' 1"	8.26m	14'	4.27m	3'
62 Span	16' 10"	5.13m	14'-18'	4.27m-5.49m	0	62 Span	16' 10"	5.13m	14'-18'	4.27m-5.49m	0
	20' 3"	6.17m	14'-18'	4.27m-5.49m	0		20' 3"	6.17m	14'-18'	4.27m-5.49m	0-1'
	23' 8"	7.21m	14'-18'	4.27m-5.49m	0-1'		23' 8"	7.21m	14'-18'	4.27m-5.49m	0-2'
	27' 1"	8.26m	14'-18'	4.27m-5.49m	0-2'		27' 1"	8.26m	14'-18'	4.27m-5.49m	0-2'
	30' 6"	9.30m	18'-6"-19'-6"	5.64m-5.94m	4'-5'		30' 6"	9.30m	19'-20'	5.79m-6.10m	4'-5'
68 Span	16' 10"	5.13m	14'-18'	4.27m-5.49m	0	68 span	16' 10"	5.13m	14'-18'	4.27m-5.49m	0
	20' 3"	6.17m	14'-18'	4.27m-5.49m	0		20' 3"	6.17m	14'-18'	4.27m-5.49m	0
	23' 8"	7.21m	14'-18'	4.27m-5.49m	0		23' 8"	7.21m	14'-18'	4.27m-5.49m	0
	27' 1"	8.26m	14'-18'	4.27m-5.49m	0		27' 1"	8.26m	14'-18'	4.27m-5.49m	0
	30' 6"	9.30m	18' 6", 19' 6"	5.64m	1'-2'		30' 6"	9.30m	18' 6"-19' 6"	5.79m-6.10m	1'-2'
	40' 9"	12.42m	17' 6", 18' 6", 19' 6"	5.33m-5.94m	3'-5'		40' 9"	12.42m	18' 6"-19' 6"	5.49m-6.10m	4'-5'

HIGHLIGHTS

- ISO Certified ► Spans: 40', 50', 51' 62' & 68'
- Heavy-duty roof & wall panels
- Galvanized and pre-painted options
- Easy access doors
- Simple to follow construction & foundation details specific to each building
- Bolt-down, formed footing channel for easy connection to foundation
- Wide range of building accessories available

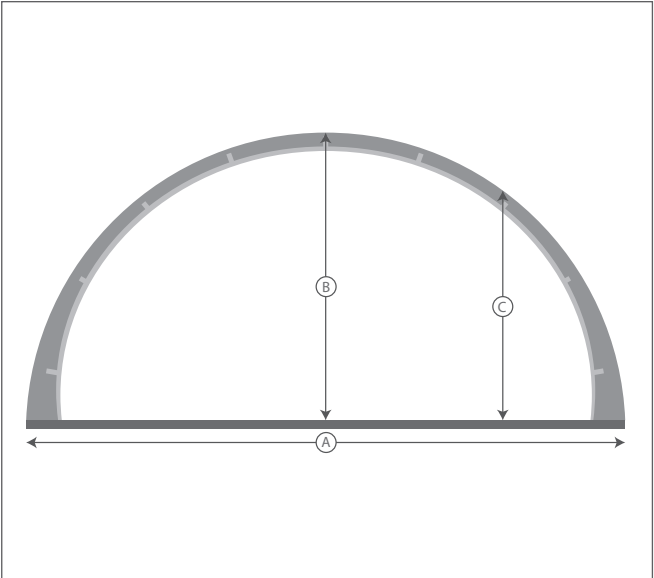
ACCESSORIES FOR YOUR MERIDIAN ARCHWALL

- Top mounted loading hatches
- Stationary ventilators

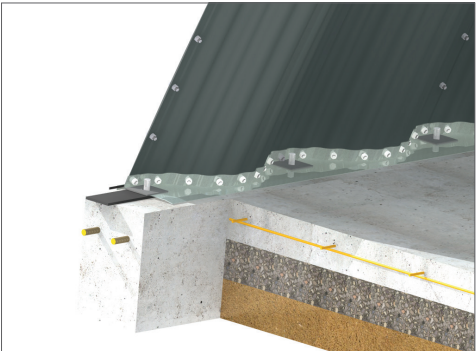


ARCHWALL MODEL SPECS

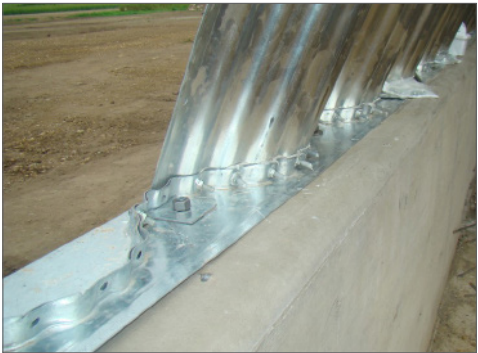
MODEL	A SPAN	B PEAK HEIGHT	C MAX. GRAIN LEVEL ON SIDEWALL	INSIDE FLOOR AREA	REQUIRED CONCRETE WALL WIDTH	CORRUGATION	FINISH	AVAILABLE GAUGES
4500	40' 12.2 m	18'-2" 5.5 m	12' 3.7 m	39 ft²/lft 11.89 m²/m	8" 203 mm	4 ½" 114 mm	Galvanized Polar white	22 – 16
	50' 15.2 m	20'-0" 6.1 m	2' 0.6 m	49 ft²/lft 14.94 m²/m	8" 203 mm	4 ½" 114 mm	Galvanized Polar white	22 – 14
	51' 15.5 m	17'-5" 5.3 m	10' 3.0 m	50 ft²/lft 15.24 m²/m	8" 203 mm	4 ½" 114 mm	Galvanized Polar white	22 – 14
	62' 18.9 m	20'-8" 6.3 m	10' 3.0 m	61 ft²/lft 18.59 m²/m	8" 203 mm	4 ½" 114 mm	Galvanized Polar white	20 – 14
	68' 20.7 m	23'-0" 7.0 m	10' 3.0 m	67 ft²/lft 20.42 m²/m	8" 203 mm	4 ½" 114 mm	Galvanized Polar white	20 – 14



ARCHWALL 4500 CORRUGATION



ARCHWALL 4500 FOOTING RENDERING



ARCHWALL 4500 FOOTING CHANNEL







EXPERIENCE THE ADVANTAGES

Meridian is committed to manufacturing the highest-quality products – with a full range of storage and handling options designed for any size of farm operation. Our vast network of dealers and customers across North America are ready to share with you their Meridian experience and how our family of products help to save time and money. The Meridian team of 1000-plus trained and dedicated employees delivers a superior product and is constantly looking at ways of improving our product lineup so we can better serve our customers.



Storage and Handling | Experience the Advantages







Storage and Handling | Experience the **Advantages**



Scan to watch our videos
www.meridianmfg.com/videos/

To find your nearest Meridian Dealer www.meridianmfg.com/dealerlocator

© 2015 Meridian Manufacturing, Inc. Registered Trademarks Used Under License. Printed in CANADA. (AW-V2-04/2015)